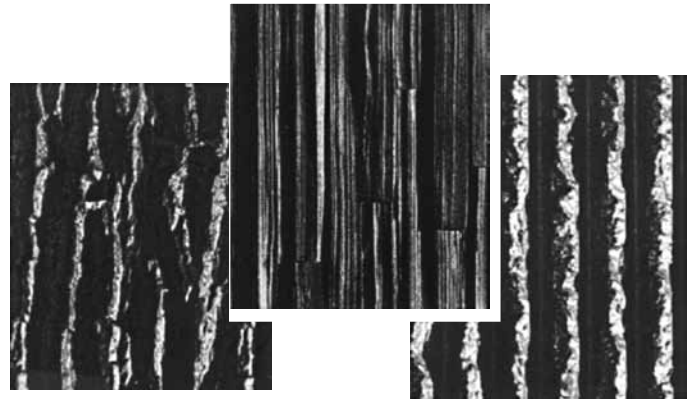


When it is time to choose concrete formliners, make your first choice Dayton Superior. For stock or custom orders, we have you covered.

Choose from three product lines: THERMOFORM, VINYL TITE and ELASTO-TEX. One will answer your concrete needs.

Easy to install and easy to strip, Dayton Superior Formliners come in more than 100 contemporary designs and are available in Single Use and Medium Reuse. Repeat patterns eliminate seam lines.

Best of all, our formliners are labor saving and money saving, and they provide esthetics to your precast project.



THERMOFORM™ Vacuum-Formed Formliners

THERMOFORM Concrete formliners are rigid plastic liners that are used to achieve detailed patterns and textured concrete surfaces for architectural concrete. You may select from a variety of patterns, or custom order to fit your needs – at only a nominal additional cost. All patterns are available in two different ranges: Single Use and Medium Reuse.

The Single Use, made from styrene, is ideal where the formliner will be used only once. The Medium Reuse, made from ABS materials, can be used up to 6 times.

The vacuum-forming technology used in this product line allows virtually unlimited texturing opportunities, offering the most flexibility in custom designed patterns. This low cost reproduction process allows you to add exceptional economic options to the design integrity of your concrete projects. Due to the stretching of the plastic sheet material that occurs during the reshaping of the thermoforming process, some patterns with a high degree of texture or relief should not be produced in the thinner, single-use material. Normally supplied in 4' x 10' sheets.

VINYLTITE™ Trapezoidal Interlocking Formliners

For sharp-edged trapezoidal textures, choose VINYL TITE formliners. The use of our VINYL TITE formliner eliminates the costly labor involved in wood construction. You get continuous uniform texture reproduction pour after pour. VINYL TITE is impervious to moisture and it won't swell, bulge or distort design integrity.

VINYLTITE is easy to use with superior results. VINYL TITE pre-drilled nailing strip lets you attach the formliner to the concrete slab or form without splitting or tearing. No more unsightly nail head impressions, and less sacking and patching costs. Interlocking joints ensure proper alignment and prevent concrete leakage. Connect the pieces to form large panel sections with no seam lines.

Wide ranges of widths and lengths. Lightweight, easy to handle and made of rigid HIPS or ABS plastic, VINYL TITE comes in Single Use, Medium Use, or Heavy Reuse materials. Profiles are available in 6 inches to 18 inches wide, extruded to specified lengths up to 40'-0" for clean installation every time.

ELASTO-TEX High Re-Use Elastomeric Formliner

ELASTO-TEX formliner is produced from a two-component urethane and is mold-bonded to 1/2" HDO plywood, ready for mounting to your forms. It is the preferred formliner material when 25 or more pours, or reuses, are required. ELASTO-TEX is available in all existing formliner patterns, as well as custom textures.

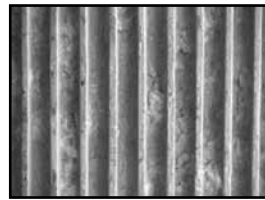
Its stiffness and compressive strength hold the desired shape during concrete placement and vibration. Its flexibility accommodates almost any desired texture or sculpture effect. ELASTO-TEX's built-in resiliency and toughness result in an exceptional capability for precise reproduction of the desired pattern or texture. Elasto-Tex improved wear resistance provides high reuse factors that could be in excess of 100 times.

Note: For more information on formliners, request a copy of the Dayton Superior Form Liner Catalog (DS52).

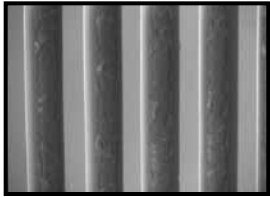
Fractured Patterns



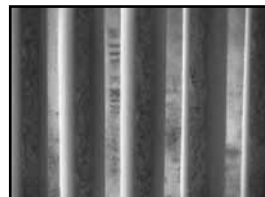
Fractured Rope Rib (2" OC rope)
 P/C 230715 0.090 mil Styrene
 P/C 230475 0.110 mil ABS
 P/C 230612 Dura-Tex
 P/C 230908 Elasto-Tex



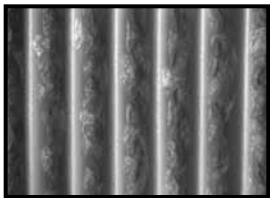
3/4" Narrow Fractured Fin
 P/C 230603 Dura-Tex
 P/C 230909 Elasto-Tex



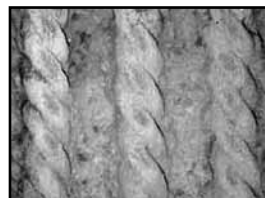
Fine Stone Rib (2" OC rib)
 P/C 230716 0.090 mil Styrene
 P/C 230448 0.110 mil ABS



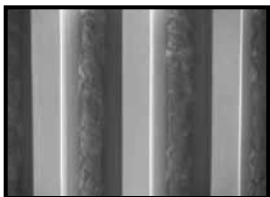
1 1/2" Fractured Fin (2" OC rib)
 P/C 230666 Dura-Tex
 P/C 230972 Elasto-Tex



3/4" Fractured Fin (1 1/2" OC fin)
 P/C 230717 0.090 mil Styrene
 P/C 230449 0.110 mil ABS
 P/C 230604 Dura-Tex
 P/C 230906 Elasto-Tex



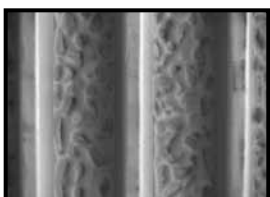
2" Fractured Rope Rib (4" OC rib)
 P/C 230625 Dura-Tex
 P/C 230929 Elasto-Tex



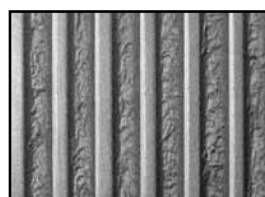
1 3/4" Fractured Fin (3" OC fin)
 P/C 230718 0.150 mil Styrene
 P/C 230499 0.150 mil ABS
 P/C 230609 Dura-Tex
 P/C 230902 Elasto-Tex



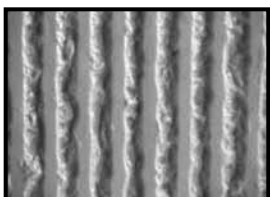
1" Fractured Fin
 (2.35" OC rib)
 P/C 270341 0.090 mil Styrene
 P/C 270343 0.110 mil ABS
 P/C 270345 Dura-Tex
 P/C 270347 Elasto-Tex



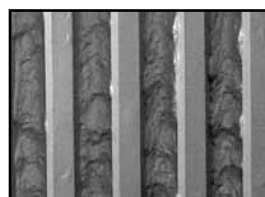
2" Broken Rock Rib (3 7/16" OC rib)
 P/C 230719 0.150 mil Styrene
 P/C 230451 0.150 mil ABS
 P/C 230619 Dura-Tex
 P/C 230925 Elasto-Tex



1" Fractured Fin
 (2" OC rib; open end)
 P/C 270580 0.090 mil Styrene
 P/C 270505 0.110 mil ABS
 P/C 270555 Dura-Tex
 P/C 270530 Elasto-Tex

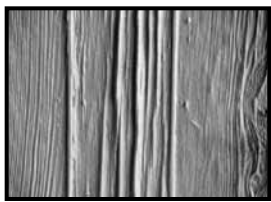


Fluted Fractured Fin (1 1/4" OC rib)
 P/C 230732 0.090 mil Styrene
 P/C 230431 0.110 mil ABS
 P/C 230658 Dura-Tex
 P/C 230933 Elasto-Tex

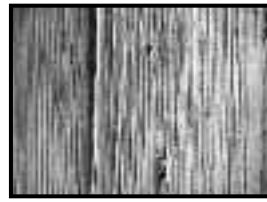


1 1/2" Fractured Fin
 (3" OC rib; open end)
 P/C 270581 0.150 mil Styrene
 P/C 270506 0.150 mil ABS
 P/C 270556 Dura-Tex
 P/C 270531 Elasto-Tex

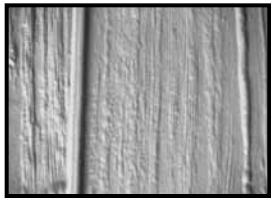
Wood Patterns



4" Wide Aged Wood
(actual 3½" width)
P/C 230703 0.070 mil Styrene
P/C 230249 0.070 mil ABS



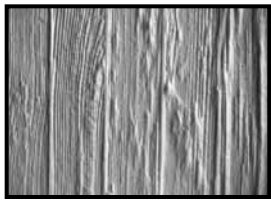
Barnwood
P/C 230613 Dura-Tex
P/C 230913 Elasto-Tex



Random Grooved Barnwood
P/C 230704 0.070 mil Styrene
P/C 230450 0.070 mil ABS



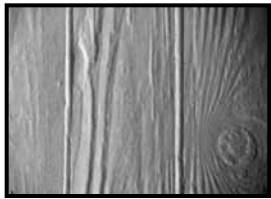
Sandblast Tongue and Groove
P/C 230614 Dura-Tex'
P/C 230915 Elasto-Tex



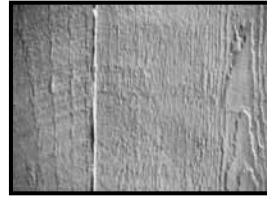
2" Wide Aged Wood
P/C 230705 0.070 mil Styrene
P/C 230479 0.070 mil ABS



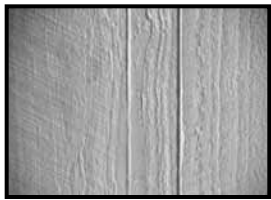
4" Variable Depth Rough Cedar
P/C 947007 0.090 mil Styrene
P/C 940005 0.110 mil ABS
P/C 230618 Dura-Tex
P/C 230921 Elasto-Tex



4" Wide Aged Cedar
P/C 230706 0.070 mil Styrene
P/C 230480 0.070 mil ABS



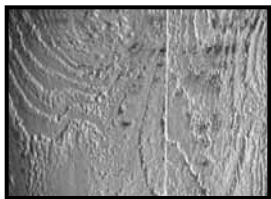
Extra Rough Sawn
P/C 230610 Dura-Tex
P/C 230903 Elasto-Tex



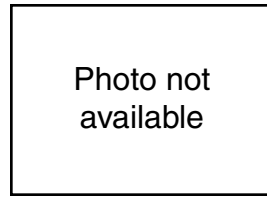
Rough Sawn
Random Length Plank
P/C 230707 0.070 mil Styrene
P/C 230481 0.070 mil ABS



2" Cedar Stake
P/C 230621 Dura-Tex
P/C 230924 Elasto-Tex



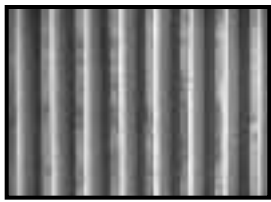
6" Cedar
P/C 230605 Dura-Tex
P/C 230483 Elasto-Tex



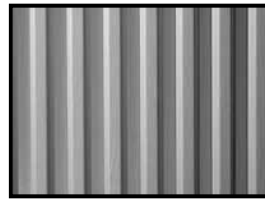
Weathered Wood
P/C 947011 0.070 mil Styrene
P/C 940003 0.070 mil ABS

Photo not available

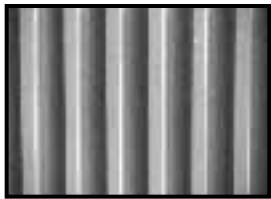
Smooth Flute Patterns



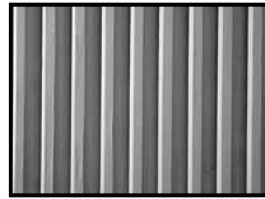
1/2" Deep Rib
(1 1/4" OC rib; closed end)
P/C 230709 0.090 mil Styrene
P/C 230244 0.110 mil ABS
P/C 230663 Dura-Tex
P/C 230969 Elasto-Tex



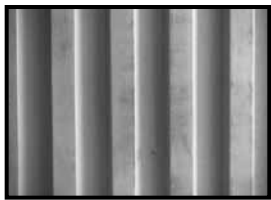
3/4" Deep Rib
(2" OC rib; open end)
P/C 270321 0.090 mil Styrene
P/C 270261 0.110 mil ABS
P/C 270301 Dura-Tex
P/C 270281 Elasto-Tex



3/4" Deep Rib
(1 1/2" OC rib; closed end)
P/C 230710 0.090 mil Styrene
P/C 230245 0.110 mil ABS



1/2" Deep Rib
(1 1/2" OC rib; open end)
P/C 270322 0.090 mil Styrene
P/C 270262 0.110 mil ABS
P/C 270302 Dura-Tex
P/C 270282 Elasto-Tex



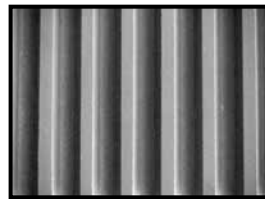
3/4" Deep Rib
(2" OC rib; closed end)
P/C 230727 0.090 mil Styrene
P/C 230460 0.110 mil ABS
P/C 230661 Dura-Tex
P/C 230968 Elasto-Tex



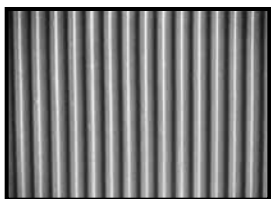
3/4" Deep Rib
(6" OC rib; open end)
P/C 270323 0.090 mil Styrene
P/C 270263 0.110 mil ABS
P/C 270303 Dura-Tex
P/C 270283 Elasto-Tex



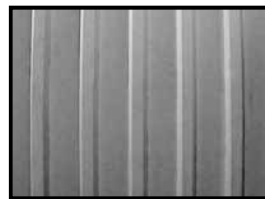
1" Deep Rib
(2 1/8" OC; rib closed end)
P/C 230714 0.090 mil Styrene
P/C 230489 0.110 mil ABS



3/4" Deep Rib
(1 1/2" OC rib; open end)
P/C 270324 0.090 mil Styrene
P/C 270264 0.110 mil ABS
P/C 270304 Dura-Tex
P/C 270284 Elasto-Tex



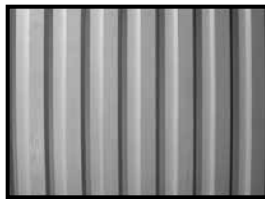
1/4" Deep Rib
(5/8" OC rib; open end)
P/C 230708 0.070 mil Styrene
P/C 230472 0.070 mil ABS



3/4" Deep Special Rib
(4" OC rib; open end)
P/C 270325 0.090 mil Styrene
P/C 270265 0.110 mil ABS
P/C 270305 Dura-Tex
P/C 270285 Elasto-Tex

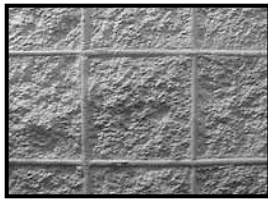


1 1/2" Deep Rib
(4" OC rib; open end)
P/C 270320 0.150 mil Styrene
P/C 270260 0.150 mil ABS
P/C 270300 Dura-Tex
P/C 270280 Elasto-Tex



3/4" Deep Rib
(4" OC rib; open end)
P/C 270326 0.090 mil Styrene
P/C 270266 0.110 mil ABS
P/C 270306 Dura-Tex
P/C 270286 Elasto-Tex

Block Patterns



8" x 8" Rock Face Block
 P/C 270330 0.090 mil Styrene
 P/C 270270 0.110 mil ABS
 P/C 270310 Dura-Tex
 P/C 270290 Elasto-Tex



8" x 16" Rock Face Block
 P/C 270331 0.090 mil Styrene
 P/C 270271 0.110 mil ABS
 P/C 270311 Dura-Tex
 P/C 270291 Elasto-Tex



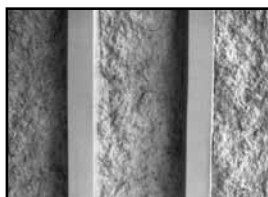
8" x 16" Rock Face Stacked Bond
 P/C 270332 0.090 mil Styrene
 P/C 270272 0.110 mil ABS
 P/C 270312 Dura-Tex
 P/C 270292 Elasto-Tex



8" x 16" Smooth Face Block
 P/C 270333 0.090 mil Styrene
 P/C 270273 0.110 mil ABS
 P/C 270313 Dura-Tex
 P/C 270293 Elasto-Tex



Masonry Slump Block
 P/C 230734 0.090 mil Styrene
 P/C 230426 0.110 mil ABS
 P/C 230624 Dura-Tex
 P/C 230928 Elasto-Tex

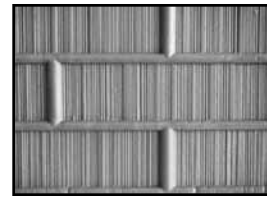


Ribbed Splitface Block
 P/C 230659 Dura-Tex
 P/C 230934 Elasto-Tex

Brick Patterns



Rustic Brick
 P/C 230723 0.070 mil Styrene
 P/C 230247 0.110 mil ABS
 P/C 230662 Dura-Tex
 P/C 230937 Elasto-Tex



Striated Brick
 P/C 230724 0.070 mil Styrene
 P/C 230222 0.070 mil ABS
 P/C 230660 Dura-Tex
 P/C 230935 Elasto-Tex



2½" x 8" Smooth Brick
 (square mortar)
 P/C 270327 0.070 mil Styrene
 P/C 270267 0.070 mil ABS
 P/C 270307 Dura-Tex
 P/C 270287 Elasto-Tex



2½" x 8" Smooth Brick
 (rounded mortar)
 P/C 270598 0.070 mil Styrene
 P/C 270515 0.070 mil ABS
 P/C 270564 Dura-Tex
 P/C 270539 Elasto-Tex

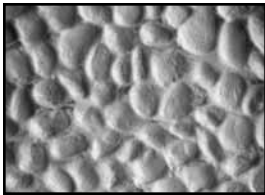


4" x 12" Smooth Brick
 (on-center square mortar)
 P/C 270328 0.090 mil Styrene
 P/C 270268 0.110 mil ABS
 P/C 270308 Dura-Tex
 P/C 270288 Elasto-Tex

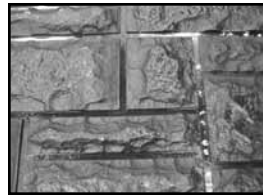


4" x 12" Smooth Brick
 (off-center square mortar)
 P/C 270329 0.090 mil Styrene
 P/C 270269 0.110 mil ABS
 P/C 270309 Dura-Tex
 P/C 270289 Elasto-Tex

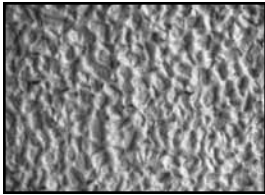
Stone Patterns



Round Stone
 P/C 230722 0.070 mil Styrene
 P/C 230251 0.070 mil ABS
 P/C 230668 Dura-Tex
 P/C 230974 Elasto-Tex



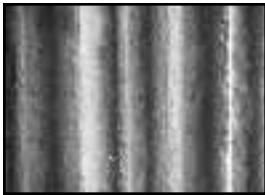
Weathered Ashlar Stone
 P/C 230664 Dura-Tex
 P/C 230970 Elasto-Tex



Small Crushed Stone
 P/C 230721 0.070 mil Styrene
 P/C 230250 0.070 mil ABS
 P/C 230626 Dura-Tex
 P/C 230930 Elasto-Tex



Old Ashlar Stone
 P/C 230429 0.090 mil Styrene
 P/C 230427 0.110 mil ABS
 P/C 230673 Dura-Tex
 P/C 230671 Elasto-Tex



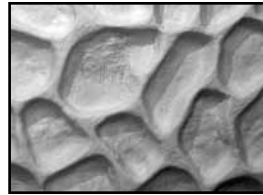
Phoenix Limestone
 P/C 230601 Dura-Tex
 P/C 230923 Elasto-Tex



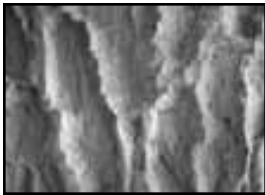
Southwest Ashlar Stone
 P/C 230430 0.150 mil Styrene
 P/C 230428 0.150 mil ABS
 P/C 230674 Dura-Tex
 P/C 230672 Elasto-Tex



Vertical Flagstone
 P/C 270559 0.090 Styrene
 P/C 270516 0.110 ABS
 P/C 230607 Dura-Tex
 P/C 230486 Elasto-Tex



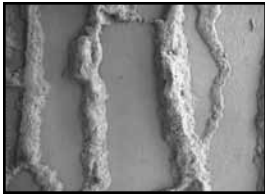
Random Fieldstone Large
 P/C 270334 0.150 mil Styrene
 P/C 270274 0.150 mil ABS
 P/C 270314 Dura-Tex
 P/C 270294 Elasto-Tex



Fractured Granite
 P/C 230611 Dura-Tex
 P/C 230907 Elasto-Tex



Running Bond Ashlar Stone
 P/C 270340 0.150 mil Styrene
 P/C 270342 0.150 mil ABS
 P/C 270344 Dura-Tex
 P/C 270346 Elasto-Tex

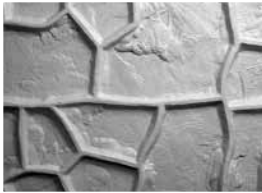


Stone Ground Fractured Granite
 P/C 230608 Dura-Tex
 P/C 230488 Elasto-Tex



Large Dry Stack Stone
 P/C 270582 0.150 mil Styrene
 P/C 270507 0.150 mil ABS
 P/C 270557 Dura-Tex
 P/C 270532 Elasto-Tex

Stone Patterns



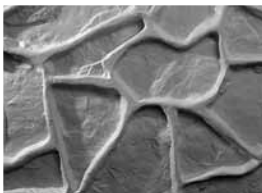
Rugged Flagstone
P/C 270575 0.150 mil Styrene
P/C 270500 0.150 mil ABS
P/C 270550 Dura-Tex
P/C 270525 Elasto-Tex



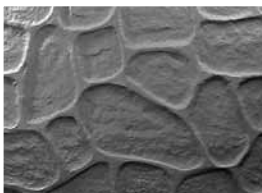
Fractured Concrete
P/C 270583 0.090 mil Styrene
P/C 270508 0.110 mil ABS
P/C 270558 Dura-Tex
P/C 270533 Elasto-Tex



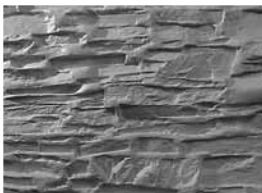
Colonial Dry Stack
P/C 270593 0.150 mil Styrene
P/C 270510 0.150 mil ABS
P/C 270560 Dura-Tex
P/C 270535 Elasto-Tex



Hill Country Flagstone
P/C 270594 0.150 mil Styrene
P/C 270511 0.150 mil ABS
P/C 270561 Dura-Tex
P/C 270536 Elasto-Tex

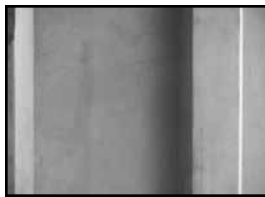


Shallow Fieldstone
P/C 270576 0.090 mil Styrene
P/C 270501 0.110 mil ABS
P/C 270551 Dura-Tex
P/C 270526 Elasto-Tex

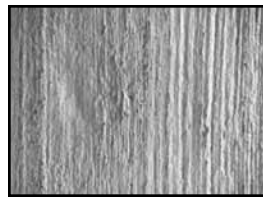


Standard Dry Stack
P/C 270578 0.150 mil Styrene
P/C 270503 0.150 mil ABS
P/C 270553 Dura-Tex
P/C 270528 Elasto-Tex

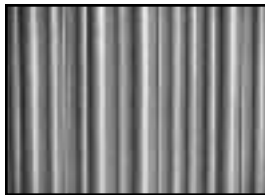
Other Patterns



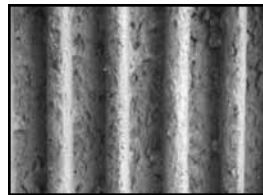
Random Vertical Rustication
 P/C 230728 0.150 mil Styrene
 P/C 230487 0.150 mil ABS
 P/C 230622 Dura-Tex
 P/C 230926 Elasto-Tex



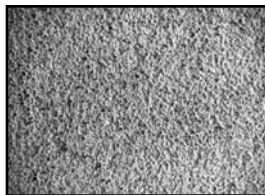
Broom Swept
 P/C 230628 Dura-Tex
 P/C 230932 Elasto-Tex



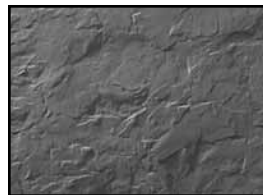
$\frac{3}{8}$ " Striated Random
 P/C 230726 0.070 mil Styrene
 P/C 230493 0.070 mil ABS



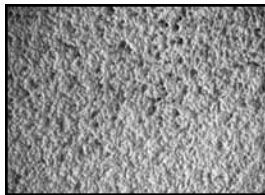
Rolled Rib
 P/C 230667 Dura-Tex
 P/C 230973 Elasto-Tex



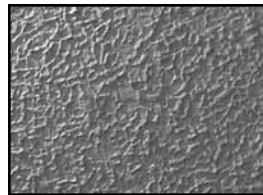
Sandblast - Fine to Medium
 P/C 270596 0.070 mil Styrene
 P/C 270513 0.070 mil ABS
 P/C 230616 Dura-Tex
 P/C 230917 Elasto-Tex



Split Slate
 P/C 270597 0.070 mil Styrene
 P/C 270514 0.070 mil ABS
 P/C 270563 Dura-Tex
 P/C 270538 Elasto-Tex



Sandblast - Coarse
 P/C 230423 0.070 mil Styrene
 P/C 230422 0.070 mil ABS
 P/C 230617 Dura-Tex
 P/C 230918 Elasto-Tex



Bush Hammer
 P/C 270592 0.090 mil Styrene
 P/C 270509 0.110 mil ABS
 P/C 270559 Dura-Tex
 P/C 270534 Elasto-Tex

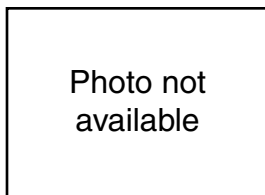
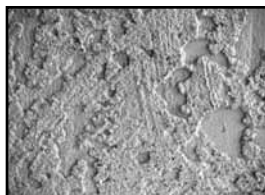
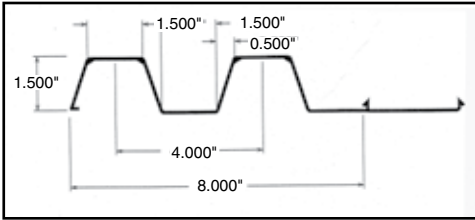


Photo not available

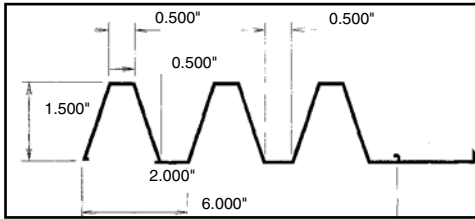
Smooth Sheet
 P/C 230702 0.070 mil Styrene
 P/C 230435 0.070 mil ABS



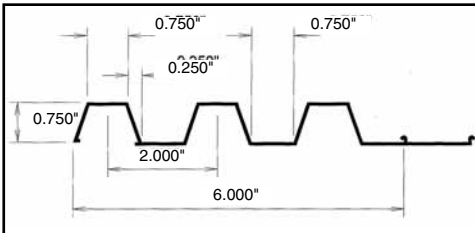
Skip Trowel Stucco
 P/C 230623 Dura-Tex
 P/C 230927 Elasto-Tex



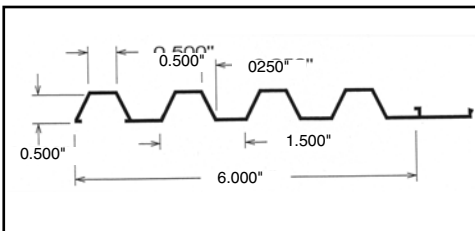
Vynlтите 602 Flute
2602VTM 1.5" High x 8.0" Wide - Ribs 4.0" OC



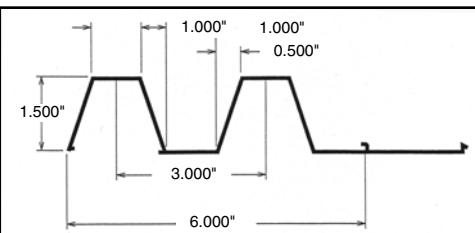
Vynlтите 603 Flute
2603VTM 1.5" High x 6.0" Wide - Ribs 2.0" OC



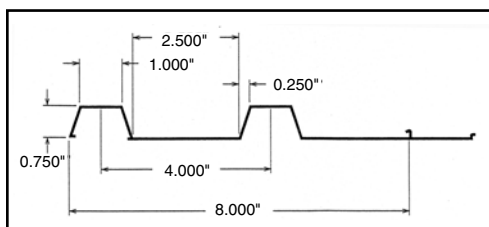
Vynlтите 604 Flute
2604VTM .75" High x 6.0" Wide - Ribs 2.0" OC



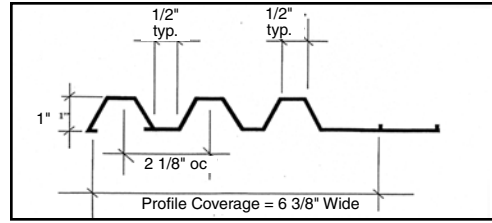
Vynlтите 605 Flute
2605VTM 0.5" High x 6.0" Wide - Ribs 1.5" OC



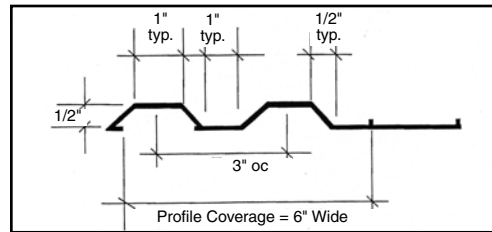
Vynlтите 606 Flute
2606VTM 1.5" High x 6.0" Wide - Ribs 3.0" OC



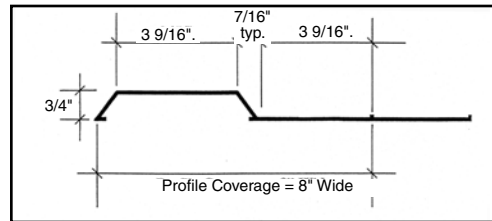
Vynlтите 607 Flute
2607VTM 0.75" High x 8.0" Wide - Ribs 4.0" OC



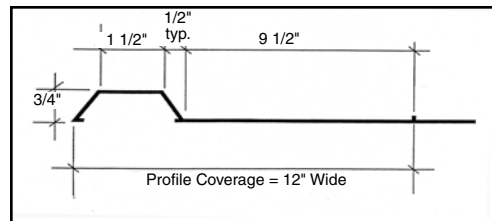
Vynlтите 623 Flute
2623VTM 1.0" High x 6.375" Wide - Ribs 2.1875" OC



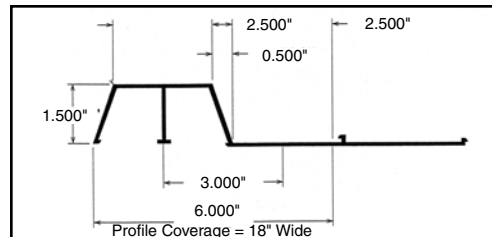
Vynlтите 625 Flute
2625VTM 0.5" High x 6.0" Wide - Ribs 3.0" OC



Vynlтите 626 Flute
2626VTM 0.75" High x 8.0" Wide - Ribs 4.0" OC

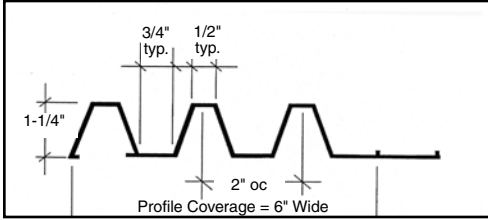


Vynlтите 628 Flute
2628VTM 0.75" High x 12.0" Wide - Ribs 12.0" OC

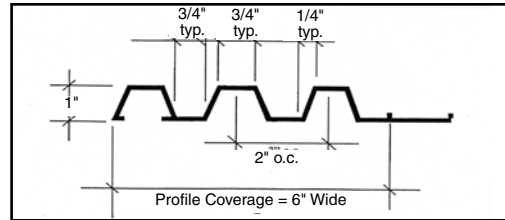


Vynlтите 630 Flute
2630VTM 1.5" High x 6.0" Wide - Ribs 6.0" OC

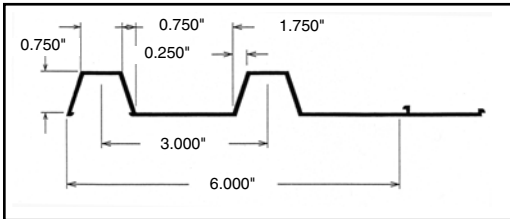
The above patterns are available as extruded ABS Rigid plastic and are a sharp, crisp-edge trapezoidal pattern. The sheets are 6" to 8" wide with lengths up to 40'. Liner is available in Single Use, Medium Reuse (2-6) and Heavy Reuse (6+). Liners have a unique interlocking system and predrilled nailing strips for easy attachment to forms.



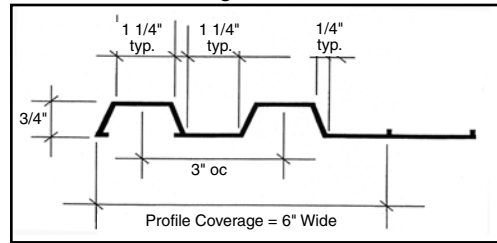
Vinyltite 632 Flute
2632VTM 1.25" High x 6.0" Wide - Ribs 2.0" OC



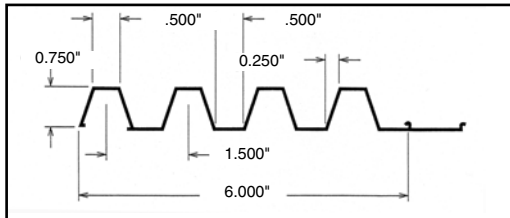
Vinyltite 620 Flute
2620VTM 1.0" High x 6.0" Wide - Ribs 2.0" OC



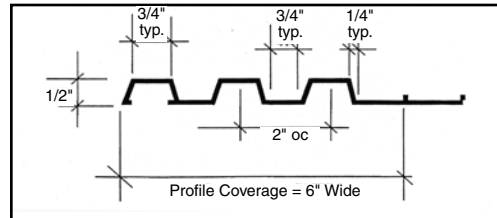
Vinyltite 609 Flute
2609VTM 0.75" High x 6.0" Wide - Ribs 3.0" OC



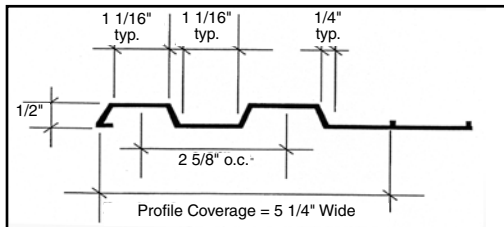
Vinyltite 633 Flute
2633VTM 0.75" High x 6.0" Wide - Ribs 3.0" OC



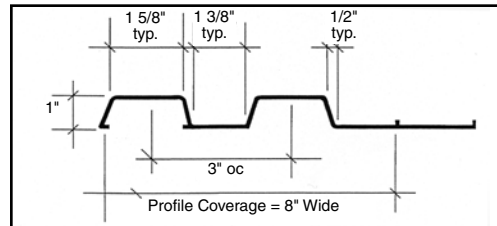
Vinyltite 610 Flute
2610VTM 0.75" High x 6.0" Wide - Ribs 1.5" OC



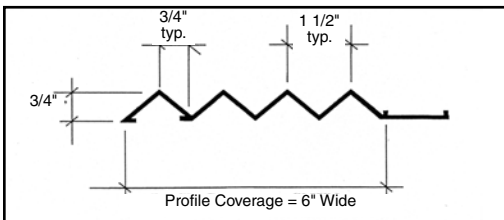
Vinyltite 639 Flute
2639VTM 0.50" High x 6.0" Wide - Ribs 2.0" OC



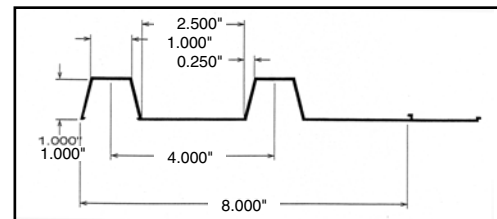
Vinyltite 613 Flute
2613VTM 0.50" High x 5.25" Wide - Ribs 2.625" OC



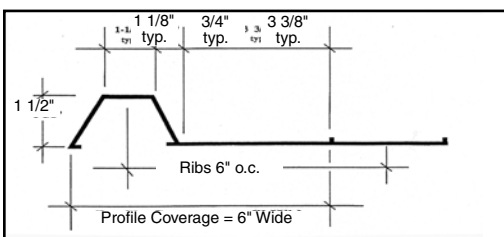
Vinyltite 640 Flute
2640VTM 1.0" High x 8.0" Wide - Ribs 3.0" OC



Vinyltite 616 Flute
2616VTM 0.75" High x 6.0" Wide - Ribs 1.5" OC



Vinyltite 670 Flute
2670VTM 1.0" High x 8.0" Wide - Ribs 4.0" OC



Vinyltite 617 Flute
2617VTM 1.5" High x 6.0" Wide - Ribs 6.0" OC

The above patterns are available as extruded ABS Rigid plastic and are a sharp, crisp-edge trapezoidal pattern. The sheets are 6" to 8" wide with lengths up to 40'. Liner is available in Single Use, Medium Reuse (2-6) and Heavy Reuse (6+). Liners have a unique interlocking system and predrilled nailing strips for easy attachment to forms.

Application Guide

Tilt-Up applications Application

Single use SPS plastic is most frequently used for Tilt-Up applications. Basic procedures for attachment are as follows:

1. Identify the pour side of the form liner. The pour side can be identified by the roughened, "hair cell" texture or as the side with the highest resolution in the pattern. The shiny or slick side of the liner will be placed against the slab or formwork.
2. Because of the nature of plastic to expand and contract, it may be necessary for the material to be trimmed. The easiest way to cut is to use a circular hand saw (skill saw) with a fine tooth, plywood blade such as the type used for cutting fine veneer paneling. Form liner without much relief may be trimmed by scoring with a sharp knife and breaking off the excess.
3. The effects of temperature, thermal expansion and contraction must be considered. The size of the liner will expand and contract approximately 1/16" in 10' with each 10° temperature change. Form liner should be installed at about the same temperature as expected during the placement of concrete. Early morning is recommended.
4. In Tilt-Up applications, the recommended method of form liner attachment is to place the liner on the slab, drill a hole through the liner and into the concrete, place a wooden dowel into the drilled hole, break the dowel off flush with the surface, and then use a large-headed roofing nail to hold the liner in place.
5. Double-sided foam tape may be used for Tilt-Up jobs. Make sure the casting slab and form liner are clean, dry and free of dust.
6. Heavy duct tape can be applied to the form liner at joints on the slab or formwork side. This is the recommended method for pre-assembling large liners for precast or Tilt-Up beds. The liner is assembled upside down and alongside the bed and then rolled into the formwork.
7. Seal all joints and contain liner on all sides so that concrete cannot move under it. Be sure the liner is flat against the casting surface, insuring that no deformations are present in the form liner. Do not allow form liner to move around freely.

Concrete Design

The design of the concrete mix will affect the finished form liner appearance because it causes changes in workability, pressure, color, set and strength.

Load concrete onto the form liner from the centers, moving the concrete towards the outside perimeter with rakes. Do not allow concrete to be pushed under the form liner at joints.

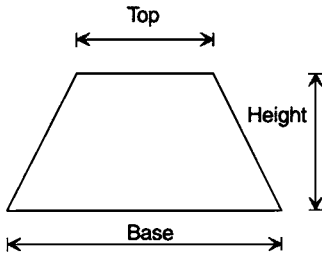
Rustication Strips

Specify Rustication Strips for concrete surfaces when distinct features or reveals are required.

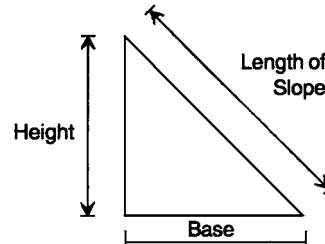
Each Rustication Strip is a durable, precision molded piece which contains a metal strap core for attachment to concrete formwork. Rustication Strips are available in a variety of standard shapes to meet almost any project requirement. Dayton Superior Rustication Strips are manufactured in premium Elasto-Tex® material for extensive reuse.

Advantages:

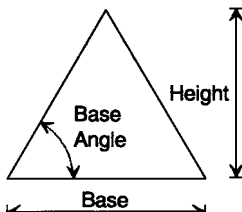
- Sharp, detailed features in finished concrete surfaces.
- Standard reusable shapes minimize forming costs.
- Enhances the appearance of exposed concrete elements.



P/C	Base	Ht.	Top
30755	3/4" x	3/4" x	1/4"
30756	1" x	3/4" x	1/2"
30757	1-1/2" x	3/4" x	1"
30758	2" x	3/4" x	1-1/2"
30759	1" x	1" x	1/2"
30760	1-1/2" x	1" x	1"
30761	2" x	1" x	1-1/2"
30762	2-1/2" x	1" x	1-3/4"
30763	3" x	1" x	2-1/4"
30764	4" x	1" x	3-1/4"
30765	5" x	1" x	4-1/4"
30766	6" x	1" x	5-1/4"
30767	1-1/2" x	1-1/2" x	1"
30768	2" x	1-1/2" x	1-1/2"
30769	3" x	1-1/2" x	2"
30770	2" x	2" x	1"
30771	3" x	2" x	2"
30772	4" x	2" x	3"



P/C	Base	Ht.	Slope
30776	3/4" x	3.4" x	1-1/16"
30777	1" x	1" x	1-7/16"
30778	1-1/2" x	1-1/2" x	2-1/16"



P/C	Base	Ht.	Angle
30773	1-5/32" x	1" x	60°
30774	1-1/2" x	1" x	53°
30775	2" x	1" x	45°